



STATE FIRE AND RESCUE SERVICE

www.pagd.lrv.it



BASIC FACTS ABOUT LITHUANIA



- Surface:
65.300 thousand km²
Border - 1731 km
- Total Population -
~ 3 million
- Administr. division:
10 counties,
60 municipalities
- Capital: Vilnius -
~ 560 000 inhabitants
- Neighbour states:
Latvia
Belarus
Poland
Russia (Kaliningrad)



MISSION OF STATE FIRE AND RESCUE SERVICE



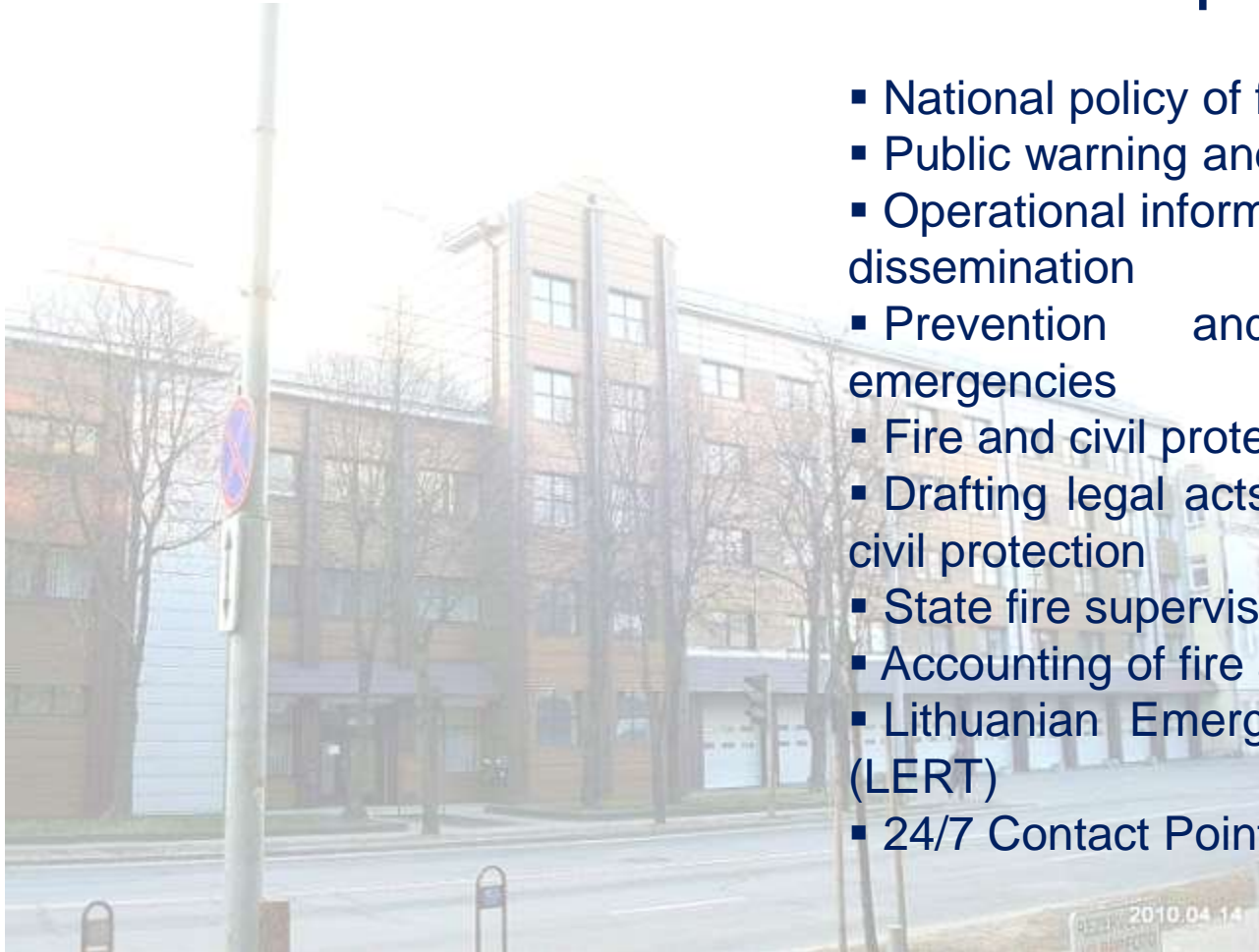
***Protect people, property and environment in case of emergencies, to
organise and perform prevention and management of fires
and other emergencies***



FIRE AND RESCUE DEPARTMENT

Responsibilities

- National policy of fire and civil protection
- Public warning and information policy
- Operational information management and dissemination
- Prevention and management of emergencies
- Fire and civil protection training
- Drafting legal acts in the field of fire and civil protection
- State fire supervision
- Accounting of fire and rescue works
- Lithuanian Emergency Response Team (LERT)
- 24/7 Contact Point for EU, NATO, UN





LEGISLATION

Main governing laws and regulations:

- Statute of the Interior of the Republic of Lithuania (Enactment date 29.06.2018)
- Fire Safety Law (Enactment date 05.12.2002)
- Civil Protection Law (Enactment date 15.12.1998)
- Standart for ensuring Fire Safety (Enactment date 17.04.2013)

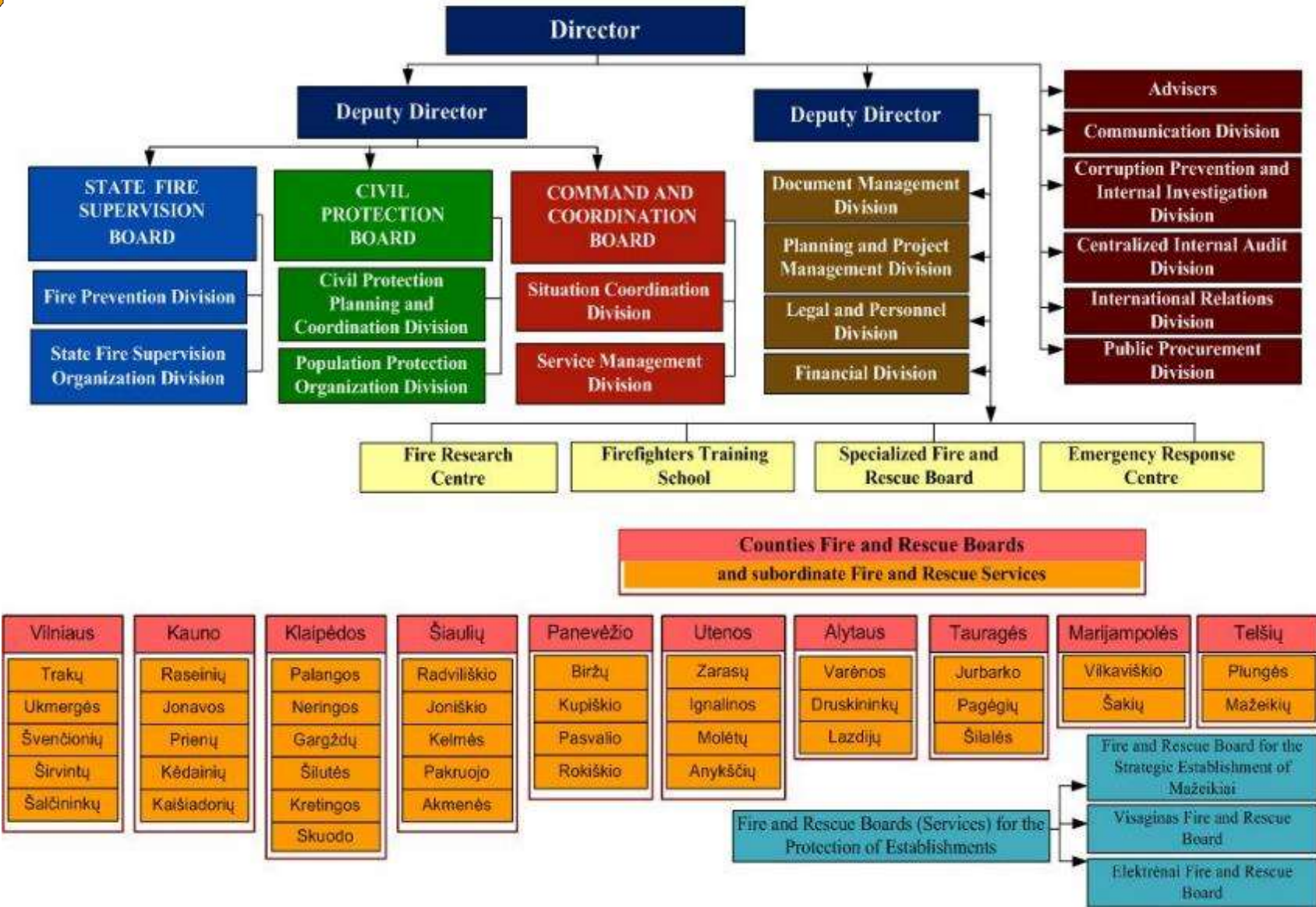
Some interesting numbers from legislation:

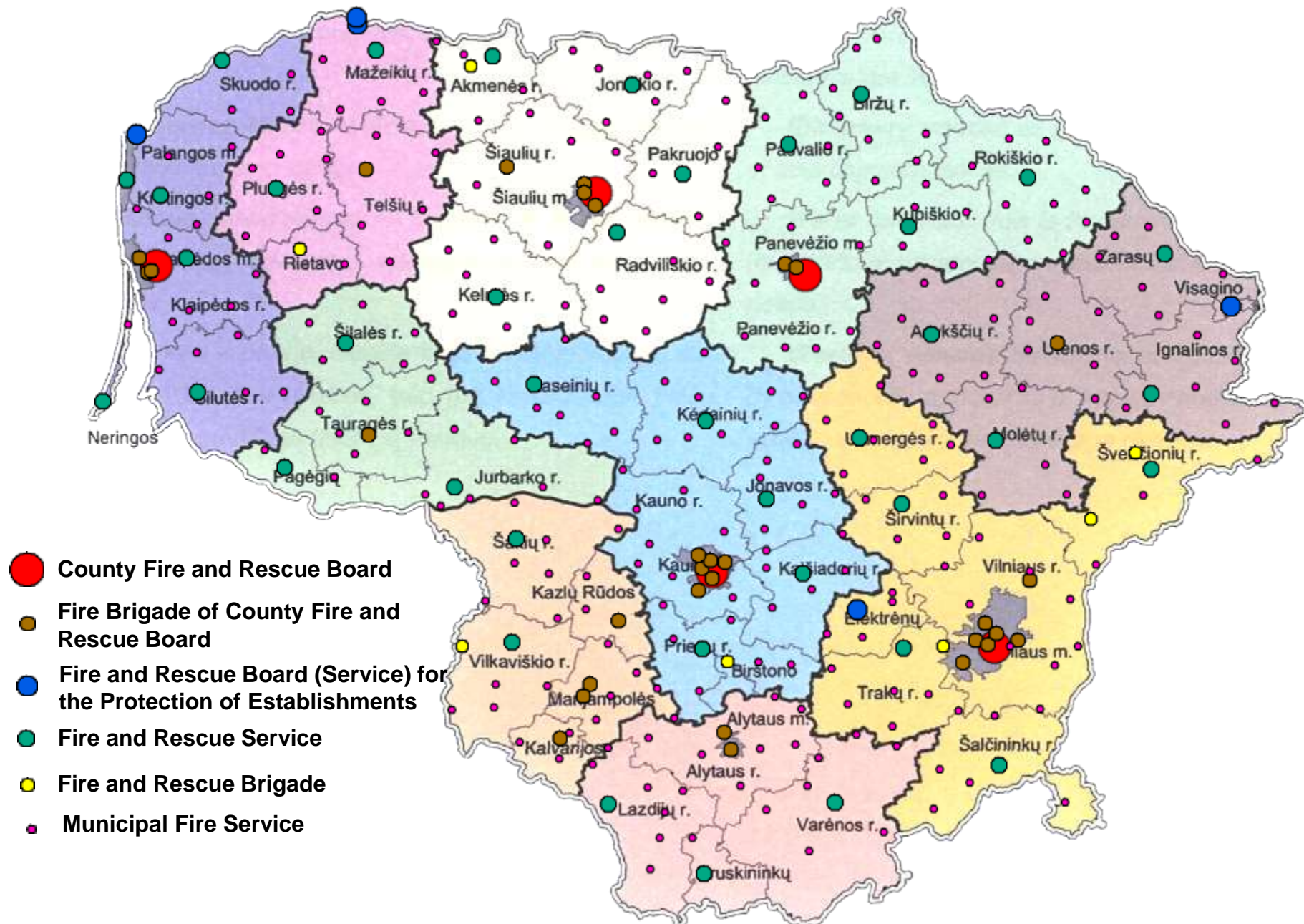
- requirements for candidates: Citizen of Lithuania, 18-60 year, relevant education, health and physical strength requirements.
- Officer pension - first rank/middle rank/ highest rank (55/60/65 year)
- 112 Calls Respond: ≥ 70 % during 8 s.
- Fire and rescue service reaction time: ≤ 1 min.
- Fire and rescue service (Fire truck with 4 firefighters) response time:
 - in urban areas: ≤ 8 min.
 - in country areas: ≤ 18 min.





THE STRUCTURE OF THE FIRE AND RESCUE DEPARTMENT UNDER THE MINISTRY OF THE INTERIOR
OF THE REPUBLIC OF LITHUANIA AND ITS SUBORDINATE BODIES







KEY REFORM POINTS

- 1 juridical and financial unit in fire and rescue system
- 5 county fire and rescue boards
- To reduce administrative workers
- To ensure prevention by visiting population $\geq 200\ 000$ living places /year





PERSONNEL

About 4680 positions in the State Fire and Rescue Service

~ 3900 officers of inner service

~ 340 public servants

~ 440 contract employees





PREPAREDNESS

State Fire and Rescue Service units are situated in the centres of municipalities and strategic establishments

- service in units is organised in 4 shifts, each operating for 24 hours
- around 700 State Fire and Rescue Service officers are on duty 24/7

Fire engines in use

246 fire trucks with water tanks

51 self-elevating platforms and ladders

370 other special rescue vehicles





ANNUALLY:

11.000 – 13.000 extinguished fires 7.000 rescue works

Fires comprise 62 %
rescue works 38 % of all dispatches

700 people rescued on the average every year

INTERESTING FACTS:



- Total equipment weight could be more then ? kg.



RESCUE WORKS

- Liquidation of natural or man-made disasters
- Localization of chemical incidents in cooperation with other institutions
- Localization of CBRN incidents
- Car accidents and first aid for injured people
- Rope rescue from height and depth
- Rescue of sinking people
- Rescue works in collapsed buildings
- Divers rescue
- Support for other emergency services





INTERNATIONAL ASSISTANCE

Lithuanian Emergency Response Team (LERT) was formed in 2005

LERT was officially globally **recognised by United Nations** as 23rd Medium-Urban Search and Rescue team in the World

In 2009 Lithuanian, Estonian and Latvian Fire and Rescue Services established a multinational high capacity pumping module **BaltFloodCombat**

In 2015 Lithuania and Latvian Fire and Rescue Services established a Latvian Lithuanian Technical Assistance Support Team (**LL-Tast**)





PUBLIC WARNING AND INFORMING



Warning system comprises:

- emergency siren warning system
- warning and information system using mobile telephones



Warning is performed at two levels:

- national
- municipal

Information and recommendations to the population on imminent or actual emergency are provided by means of national radio and television, local transmitters and media





FIRE RESEARCH CENTRE

It is the only fire safety expert institution in Lithuania having the appropriate compliance assessment and testing equipment as well as competence

- investigates fires, their causes and consequences
- performs expertise
- performs experimental research and tests
- performs pyrotechnic production safety assessments
- performs flammability and fire resistance testing and testing of the compliance of fire equipment and construction products



The Centre is notified by the European Union and accredited in the National Accreditation Bureau under the Ministry of Economy to perform fire testing and certification for respective fire equipment and construction products



FIREFIGHTERS TRAINING SCHOOL

- trains qualified broad profile firefighters rescuers for Lithuanian Counties Fire and Rescue Boards and Municipal Fire Brigades
- performs professional training
- performs informal adult education in the fields of fire and civil protection
- organises qualification and competence raising courses for officers of the State Fire and Rescue Service



50 firefighters-rescuers graduate from the School annually



EMERGENCY RESPONSE CENTRE

112 number operates in Lithuania in all telephone communication networks



- 3 Regional 112 emergency call and dispatch centres in Vilnius, Klaipėda and Alytus (only dispatch);

- 234 officers work in shifts



THANK YOU!